



*Association of Korean Neuroscientists*

[www.akneuro.org](http://www.akneuro.org)

[www.facebook.com/groups/akneuro](https://www.facebook.com/groups/akneuro)

**43RD AKN  
MEETING REPORT  
2025**

**SAN DIEGO, CA**

**NOVEMBER 17, 2025**

**HORTON GRAND HOTEL**





**Association of  
Korean  
Neuroscientists**

# MEETING PROGRAM

**President**

Jae Kyu Lee, Ph.D.  
University of Miami

**Executive Secretary**

Kevin Park, Ph.D.  
UT Southwestern

**Treasurer**

Yong-Hwan Kim, Ph.D  
Boise State University

**Vice-President**

Yoonsuck Choe, PhD  
Sung Han, PhD  
Mi-hyeon Jang, PhD  
Seonil Kim, PhD  
Yongsoo Kim, PhD  
Yu Shin Kim, PhD  
Jaerock Kwon, PhD  
Jae-Kyung Lee, PhD  
Eunsu Park, PhD  
Jung A Woo, PhD

**Co-Host: KSBNS**



**6:30 –7:00 Welcome and Ice-Breaking Events**

Master of Ceremonies:  
Dr. Jin Hyung Lee  
Dr. Dongjoo Choi  
Introduction, ice-breaking events

**7:00 –7:05 Opening Remark**

Dr. Jae Kyu Lee (AKN President)  
Dr. Justin CJ Lee (KSBNS President)

**7:05 –7:10 Sponsor and Distinguished Supporter Appreciation**

Dr. Jae Kyu Lee (AKN President)

**7:10 - 7:40 Junior Faculty Awards & Presentations**

Dr. Seungwoo Kang (Augusta Univ)  
Dr. Chung Sub Kim (Augusta Univ)  
Dr. Eun Su Park (UTHealth Houston)

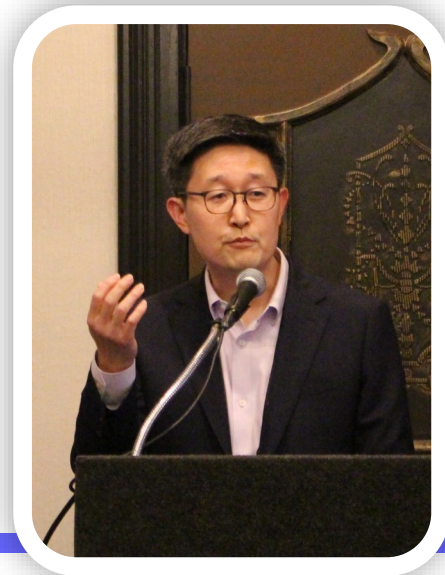
**7:40 – 8:40 AKN Heart Signal – Matchmaking Game for AKN members**

Recognizing the Young Generation  
Neuroscientists

**8:40 – 9:00 Wish Come True Session**

**9:00 – 9:20 AKN Junior Research Scientist, Postdoc, and Pre-doc Award**

**9:20 – 9:30 Closing Remark, Raffle and Photo**



# MEETING SUMMARY



The 43rd AKN annual meeting was held at the Horton Grand Hotel in San Diego. The event started at 6:30pm and was over at approximately 9:30pm.

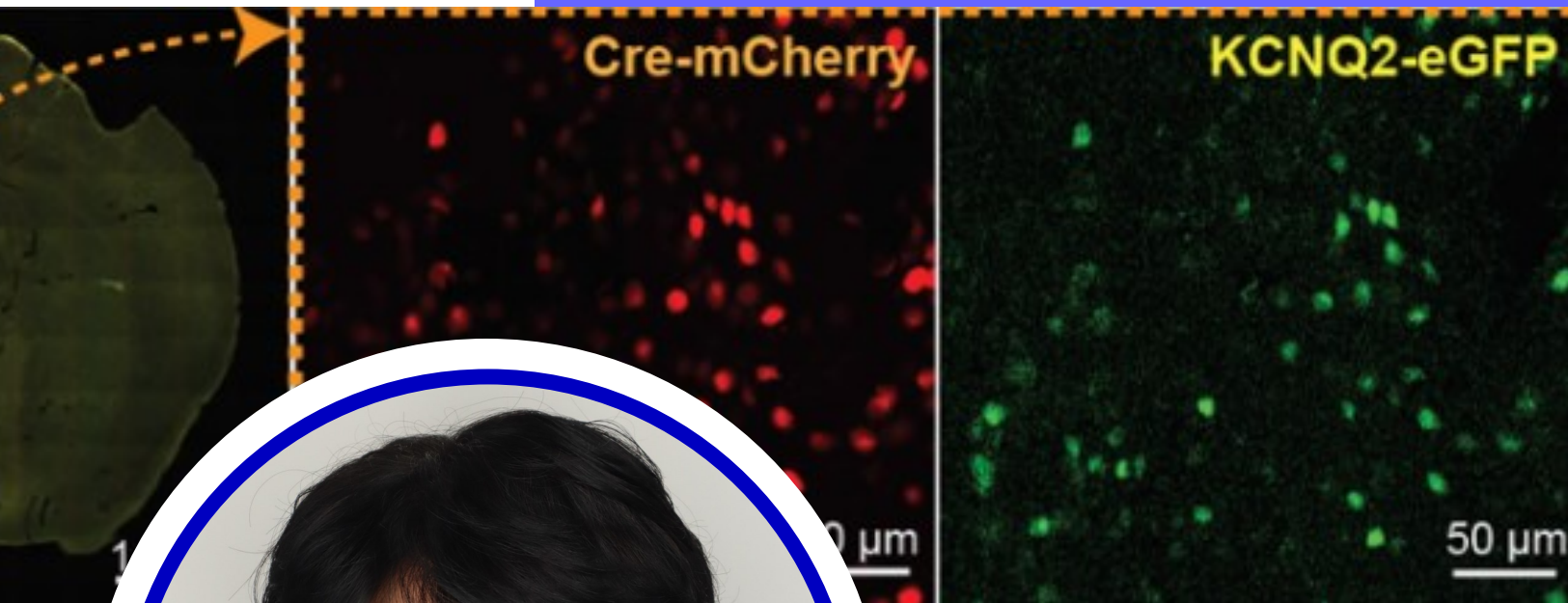
Approximately 235 members from both Korea and US attended the meeting. Dr. Dongjoo Choi and Dr. Jin-Hyung Lee were the MC's, and they conducted games and other quizzes with Starbucks gift cards as prizes. This year, we planned a Wish Come True Session for networking where attendees were able to meet any attendee of their choice one-on-one.

There was a pre-meeting dinner on November 16th at Buga Korean BBQ restaurant with faculty and officials from the sponsoring institutions. The dinner started at 6:30 and ended around 9:00. There were approximately 40 people in attendance.





# JUNIOR FACULTY AWARD



Seungwoo Kang , PhD

Assistant Professor  
Augusta University

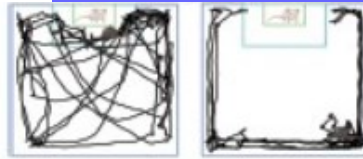
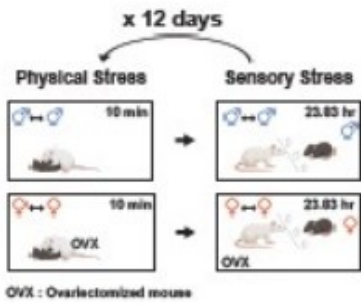
Our lab focuses on the neurobiological mechanisms underlying addiction and its comorbidities. Specially, our research seeks to characterize the local tripartite synapses and long-range circuits in the brain that underlie adaptive and maladaptive behaviors driven by positive and negative reinforcement during the transition from substance use to dependence.

To expand our understanding of the cell type-, circuit-, context-, and age-dependent neuropharmacological basis in a variety of related pathologies, our research applies multi-layered combination of biochemical, electrophysiological, and behavioral assays with new approaches such as a real-time behavior-synchronized brain recording and computational analysis. Based on those findings, our long-term goal is to identify brain-wide signatures to predict the risk of related diseases.

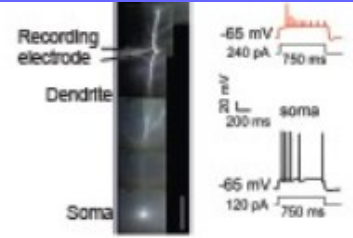
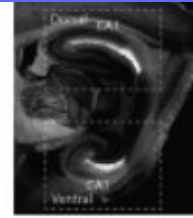


Association of  
Korean  
Neuroscientists

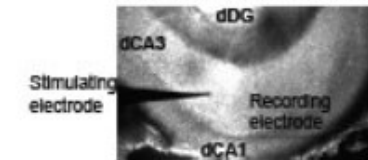
# JUNIOR FACULTY AWARD



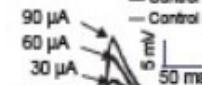
Spontaneous  
Alternation Performance



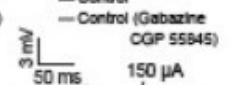
Synaptic Transmission



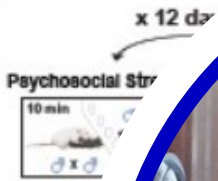
evoked EPSPs



evoked IPSPs



Witnessing Social Defeat Stress

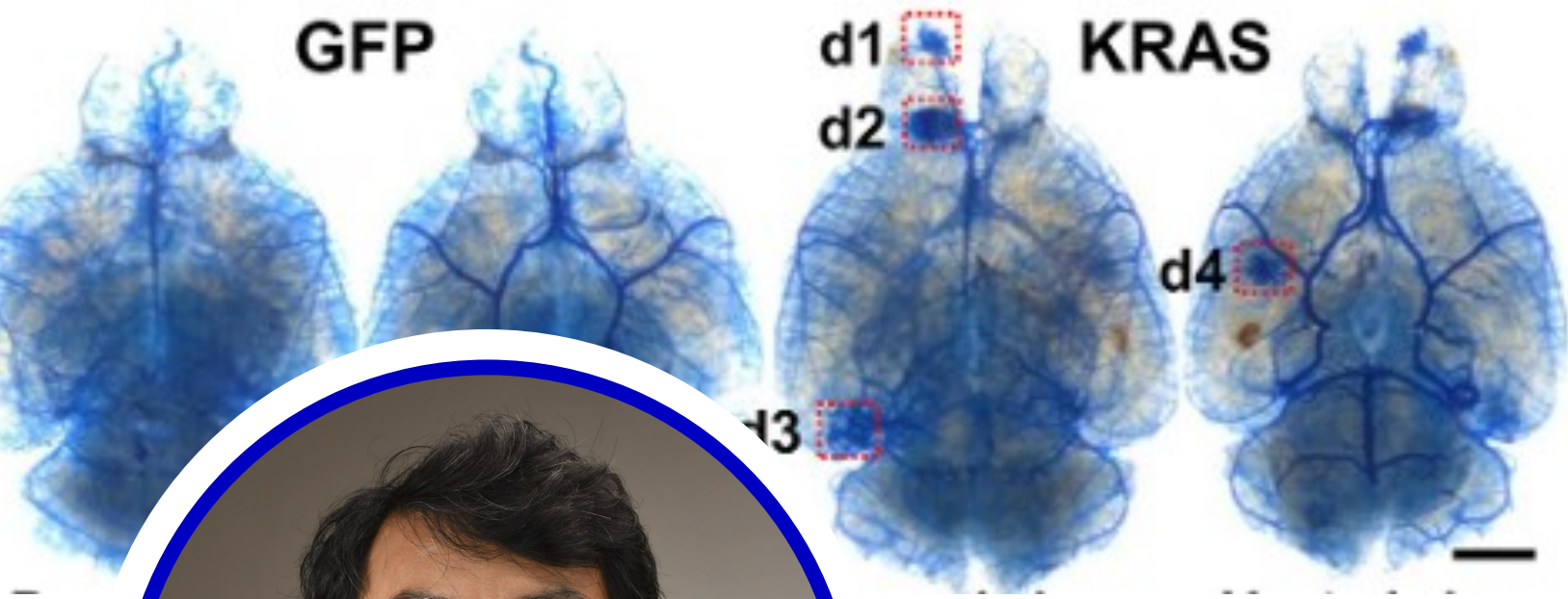


Chung Sub Kim, PhD

Assistant Professor  
Augusta University

My research is primarily centered on investigating the cellular and molecular mechanisms that contribute to individual variations and sex differences in social avoidance and stress coping. We employ a comprehensive approach, utilizing a combination of advanced techniques such as electrophysiology—including whole-cell patch-clamp recordings and cell-attached recordings at the soma and dendrites—alongside immunostaining, Western blot, Real-Time PCR, and ELISA. In collaboration with Dr. Kang from the Department of Pharmacology and Toxicology, our lab explores in vivo neuronal excitability of hippocampal CA1 neurons using cutting-edge techniques. Dr. Kang's expertise allows us to leverage fiber photometry and head-mounted miniature microscopy.

To model social avoidance, we employ both direct physical and witnessing social defeat stress paradigms. Additionally, we investigate maladaptive fear memory using contextual fear conditioning with post-training of acute stress or corticosterone injection. Our research extends to include the examination of the impact of single-prolonged stress, coupled with post-training corticosterone injection. Through these multifaceted methodologies, we aim to uncover the intricate cellular and molecular mechanisms underlying the observed individual variations and sex differences in social avoidance, stress coping, and maladaptive fear memory.



Eunsu Park, PhD

Assistant Professor  
UTHealth Houston

Laboratory of Glia Biology in Cerebrovascular Disease

We are exploring the role of glia (microglia and astrocytes) in the pathology of cerebrovascular/neurological disease (brain arteriovenous malformation, stroke, Parkinson's disease, Alzheimer's disease, and aging). We specifically focus on the cross-talk mechanisms between glia and cells in the blood-brain barrier (BBB), blood immune cells, and neurons. In cerebrovascular disease, we recently established a novel brain arteriovenous malformation (bAVM)/intracerebral hemorrhage (ICH) mouse model by overexpression of mutant KRAS (oncogene) in endothelial cells (Park et al., 2021 *Annals of Neurology*)

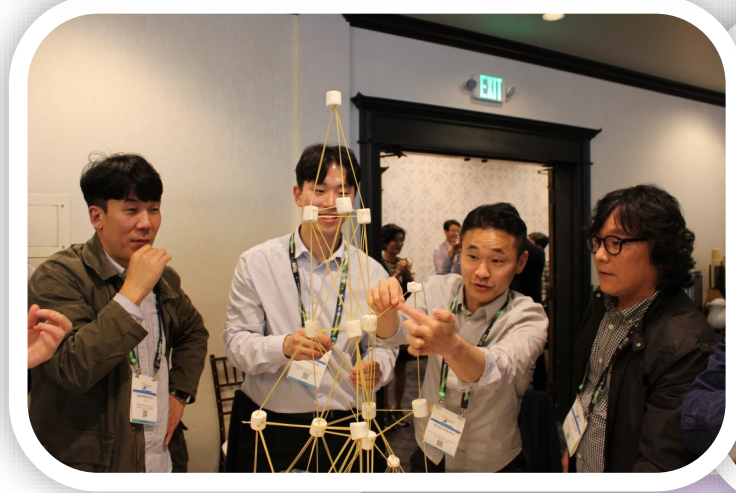
Using the cerebrovascular and neurological disease mouse model, we explore the molecular and genetic mechanisms, biomarkers, and immune system changes. In addition, we collaborate with research clinicians by sharing resources from human patients. The translational approaches using animal models with risk factors and collaborating with clinical teams will narrow the gap between the pre-clinical and clinical settings and facilitate our ultimate goal of developing therapeutic strategies for patients.

# JUNIOR RESEARCH SCIENTIST AWARDS

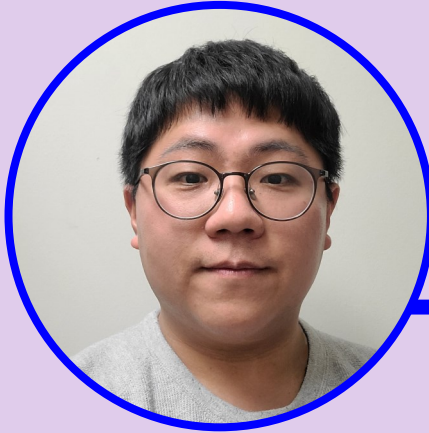


Minju Jeong, PhD

UCSD  
Drug seeking circuit

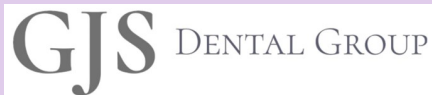


# POST-DOCTORAL AWARDS



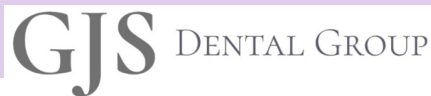
Kyungdeok Kim, PhD

Washington Univ St. Louis  
Meningeal lymphatics-microglia  
axis



SangYoon Y. Ko, PhD

Hospital for Sick Children  
Hippocampal engram circuitry



Jinsu Lee, PhD

Brigham and Women's Hospital,  
Harvard Medical School  
Neuroimmune interaction in stress



Jee Hyun Yi, PhD

Institute for Basic Science  
VIP neurons in cognitive control

# PRE-DOCTORAL AWARDS



Eunyoung Kim

University of Illinois at  
Urbana-Champaign  
Anxiety and social behavior



Woo Seok Song

Seoul National University  
Adult hippocampal neurogenesis



Mirae Jang

Seoul National University  
Neuropathic pain



Jaeeon Lee

Seoul National University  
Bergman glia in pain



# 2025 AKN COUNCIL

## **AKN Research Symposium Committee:**

### Co-Chairs:

Mihyeon Jang, PhD, Rutgers Univ  
Jung A Woo, PhD, Case Western Reserve Univ

### Members:

Jun Hee Kim, PhD, University of Michigan  
Jae-Kyung Lee, PhD, University of Georgia  
Min Seon Park, PhD, University of Miami

## **SfN/AKN Annual Meeting Committee:**

### Co-Chairs:

Seonil Kim, PhD, Colorado State Univ  
Sung Han, PhD, Salk Institute

### Members:

Dongjoo Choi, PhD, UTHealth Houston  
Jin Hyung Lee, PhD, Stanford University

## **AKN eTalk Committee**

### Co-Chairs:

Jae-Kyung Lee, PhD, University of Georgia  
Jung A Woo, PhD, Case Western Reserve Univ

### Members:

Insup Choi, PhD, Northwestern University  
Jee Yeon Hwang, PhD, Creighton University  
Hyoung-Gon Lee, PhD, UT San Antonio  
Tae-In Kam, PhD, Johns Hopkins University  
Seungwoo Kang, PhD, Augusta University  
Seong Su Kang, PhD, Emory University  
Jun Hee Kim, PhD, University of Michigan  
Seonil Kim, PhD, Colorado State University  
Namchul Kim, PhD, University of Minnesota  
Hyun-Kyoung Lee, PhD, Baylor College of Medicine

## **AKN Awards Committee**

### Chairs :

Yu Shin Kim, PhD, University of Alabama Birmingham

### Members:

Hyunglok Chung, PhD, Houston Methodist  
Hachung Chung, PhD, Columbia University  
Joongkyu Park, PhD, Wayne State University  
Jee Yeon Hwang, PhD, Creighton University  
Sora Shin, PhD, Virginia Tech University  
Tae-In Kam, PhD, Johns Hopkins University

## **Membership Committee**

Eunsu Park, PhD, UT Health Houston

## **IT/Webpage Committee**

### Co-Chairs :

Yoonsuck Choe, PhD, Texas A&M University  
Jaerock Kwon, PhD, University of Michigan-Dearborn

### Members:

Won Chan Oh, PhD, University of Colorado  
Jun Ho La, PhD, UT Medical Branch Galveston

## **Career Development Committee**

### Chair:

Yongsoo Kim, PhD, Penn State University

### Members:

Hyun-Kyoung Lee, PhD, Baylor College of Medicine  
Dae-Yeol Lee, PhD, Johns Hopkins University  
Seung-Hee Yoo, PhD, UTHealth Houston

## **Other Council Members**

Sunghee Cho, PhD, Burke Neurological Institute/Cornell  
Doo-Sup Choi, PhD, Mayo Clinic  
Jin Mo Chung, PhD, UT Medical Branch  
Shin Hyeok Kang, PhD, Temple University  
Un Jung Kang, MD, NYU Grossman School of Medicine  
Eunhee Kim, PhD, UT Health Houston  
Jungsu Kim, PhD, Indiana University  
Kwang-Soo Kim, PhD, McLean Hospital/Harvard  
Yong Kim, PhD, Rutgers University  
Hanseok Ko, PhD, Johns Hopkins University  
Hyungbae Kwon, PhD, Johns Hopkins University  
Daewoo Lee, PhD, Ohio University  
ChangHui Pak, PhD, UMass Amherst  
In-Hyun Park, PhD, Yale University  
Young-Jin Son, PhD, Temple University  
Hoonkyo Suh, PhD, Cleveland Clinic  
Andrew S. Yoo, PhD, Washington University

# 2025 AKN MEETING SPONSORS

## PLATINUM

---

**GJS** DENTAL GROUP

## GOLD

---

**ibS** 기초과학연구원  
Institute for Basic Science

**GenDEPOT**

**KBRI** 한국뇌연구원  
Korea Brain Research Institute

## SILVER

---

**lifecanvas**  
technologies

**GENIXXCURE**

**Nexmos**



**Scitech Korea**

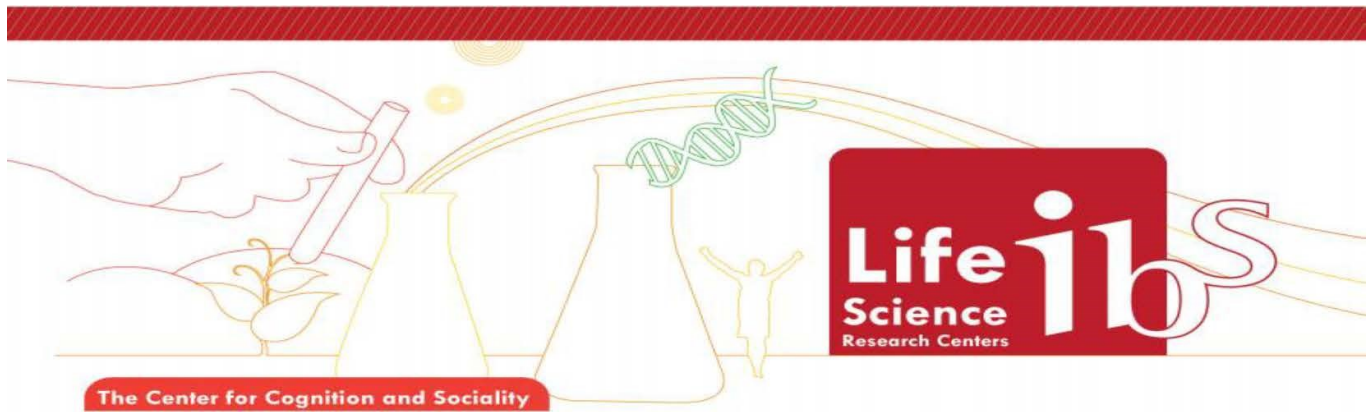
**HLB**  
HLB NeuroTobe

## BRONZE

---

**ablbio**  
medicine for a better life

**SAMSUNG**



#### The Center for Cognition and Sociality

We have many questions about how the brain works: how do states of consciousness reside in the brain? How is consciousness controlled? How does memory work? How are emotions controlled? How do we make decisions when required to do so? We are particularly interested in posing these questions in a socio-behavioral context. Our approaches to the above questions will focus on studying model animals like the mouse. Integration of diverse observations obtained through multidisciplinary tools are absolutely necessary if we are to obtain meaningful answers to any of the above questions. We firmly believe these endeavors will yield important clues to help cure various neuropsychiatric diseases.

#### Contact

Website: <http://brain.ibs.re.kr>

#### Center for Synaptic Brain Dysfunctions

Our Center is committed to understanding the molecular mechanisms underlying the formation, differentiation, maintenance, and plasticity of neuronal synapses. A large number of synaptic proteins have recently been associated with various neuropsychiatric developmental disorders including autism, attention deficit/hyperactivity disorder (ADHD), schizophrenia, intellectual disability, and emotional disorders. The notion that defective synaptic proteins can be associated with brain dysfunctions has recently been termed "synaptopathy" and our Center for Synaptic Brain Dysfunctions strives to unravel the key mechanisms concerning said pathologies via studies and characterizations of relevant transgenic mice.

For more information about our research center and recruitment, please refer to the website (<http://molneuro.kaist.ac.kr>).

#### Center for Neuroscience Imaging Research

The IBS Center for Neuroscience Imaging Center (CNIR) performs integrative brain science research to determine the relationship between structure and function and investigate neural networks of behavior, cognition and affection in primates. The CNIR consists of multiple labs of neuroimaging, systems neuroscience, cognitive neuroscience, and computational neuroscience, and core facilities including non-human primates, multi-photon microscopy, and ultrahigh field MRI. The CNIR has open research environment and encourages collaboration.

Website: <https://cnir.ibs.re.kr> E-mail: [enyingp@skku.edu](mailto:enyingp@skku.edu)